

MINI SERIES

FAST HOT WATER



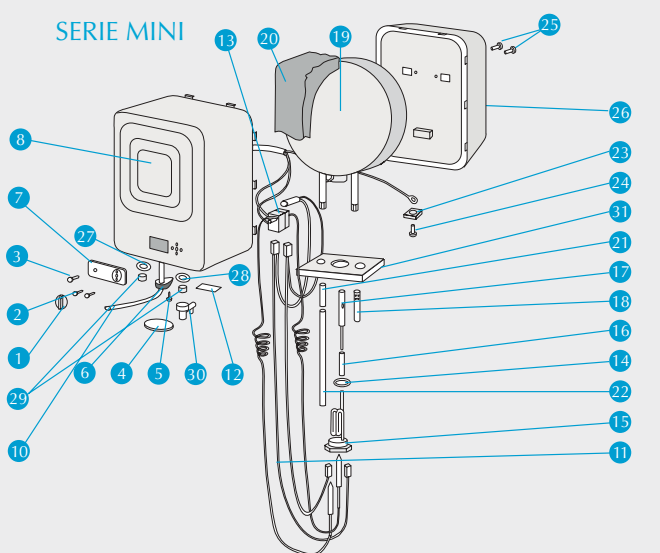
The 10 and 15 nominal litre water heaters of the Mini series represent the best way to satisfy all the users requiring small quantities of hot water quickly. It is the ideal product for small users such as shops and offices.

860 °C Bayer process enamelling of the steel boiler (according to the norm DIN 4753) plus magnesium anode ensure a long lasting protection against corrosion.

Armoured resistance in both above or below the sink models are equipped with an adjustable thermostat and with safety against over-heating.

Hydraulic safety valve is calibrated at 8 bar.

Insulation made up by polyurethane foam CFC free respects the environment.



- | | |
|-----------------------------------|--|
| 1 - Thermostat knob | 19 - Water tank |
| 2 - Thermostat screws | 20 - Polyurethane foam insulation |
| 3 - Pilot lamp | 21 - Adaptor |
| 4 - Inspection cover | 22 - Stainless extension for outlet water pipe |
| 5 - Screws for cable block | 23 - Earth plate |
| 6 - Cable block | 24 - Earth screw |
| 7 - Brand name | 25 - Screw tank holder |
| 8 - Frontal cover | 26 - Back case |
| 9 - Screw for inspection cover | 27 - Red ring |
| 10 - Power wire | 28 - Blue ring |
| 11 - Wiring with pilot lamp | 29 - Thread protection |
| 12 - Identification plate | 30 - Safety and non return valve |
| 13 - Safety thermostat | 31 - Flexible protection |
| 14 - O-Ring heating element | 32 - Chrome-plated profile |
| 15 - Heating element (screw type) | 33 - Cable and binding-screw |
| 16 - Protection for anode shank | 34 - Lock for thermostat cables |
| 17 - Magnesium anode | 35 - Screw |
| 18 - Jet breaker | |

