

TEPIDO WATER HEATERS



prometeo
TRADING & CONSULTING • SRL

38100 TRENTO - ITALY
VIA SAN MARCO 3
TEL. +39 0461 260719 - 261282
FAX: +39 0461 985308
E-MAIL: info@prometeogroup.com
<http://www.prometeogroup.com>

tepidido

MINI SERIES

FAST HOT WATER



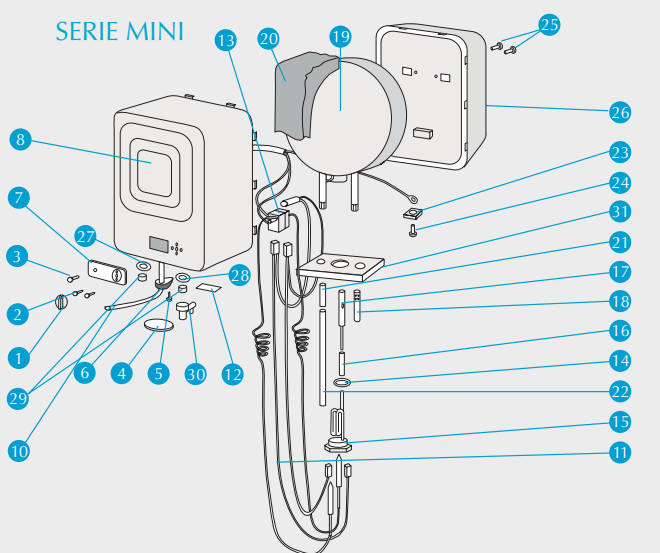
The 10 and 15 nominal litre water heaters of the Mini series represent the best way to satisfy all the users requiring small quantities of hot water quickly. It is the ideal product for small users such as shops and offices.

860 °C Bayer process enamelling of the steel boiler (according to the norm DIN 4753) plus magnesium anode ensure a long lasting protection against corrosion.

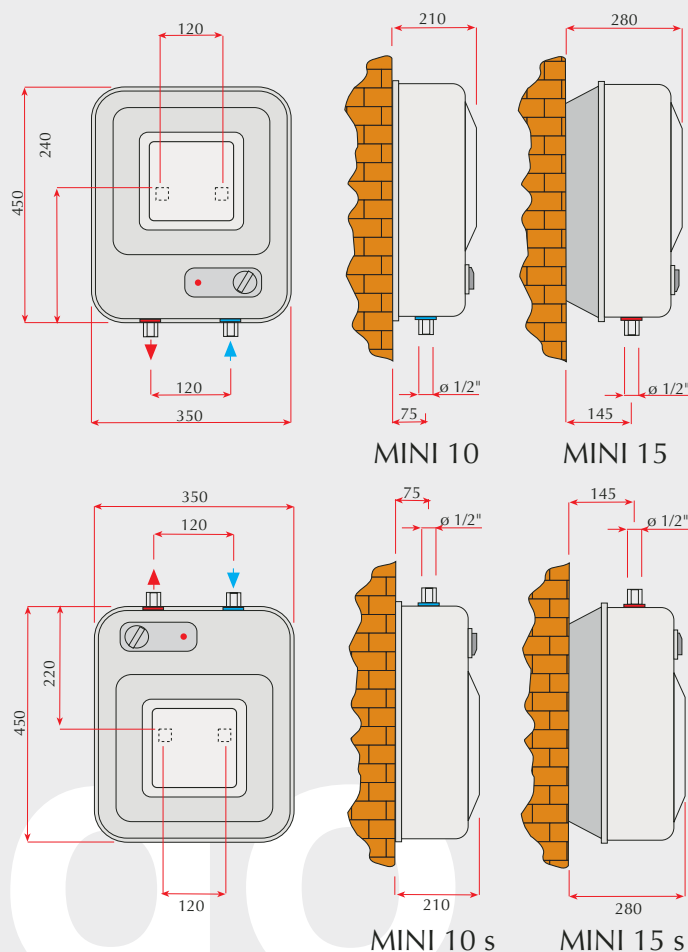
Armoured resistance in both above or below the sink models are equipped with an adjustable thermostat and with safety against over-heating.

Hydraulic safety valve is calibrated at 8 bar.

Insulation made up by polyurethane foam CFC free respects the environment.



- | | |
|-----------------------------------|--|
| 1 - Thermostat knob | 19 - Water tank |
| 2 - Thermostat screws | 20 - Polyurethane foam insulation |
| 3 - Pilot lamp | 21 - Adaptor |
| 4 - Inspection cover | 22 - Stainless extension for outlet water pipe |
| 5 - Screws for cable block | 23 - Earth plate |
| 6 - Cable block | 24 - Earth screw |
| 7 - Brand name | 25 - Screw tank holder |
| 8 - Frontal cover | 26 - Back case |
| 9 - Screw for inspection cover | 27 - Red ring |
| 10 - Power wire | 28 - Blue ring |
| 11 - Wiring with pilot lamp | 29 - Thread protection |
| 12 - Identification plate | 30 - Safety and non return valve |
| 13 - Safety thermostat | 31 - Flexible protection |
| 14 - O-Ring heating element | 32 - Chrome-plated profile |
| 15 - Heating element (screw type) | 33 - Cable and binding-screw |
| 16 - Protection for anode shank | 34 - Lock for thermostat cables |
| 17 - Magnesium anode | 35 - Screw |
| 18 - Jet breaker | |



MAXI SERIES

SIMPLICITY

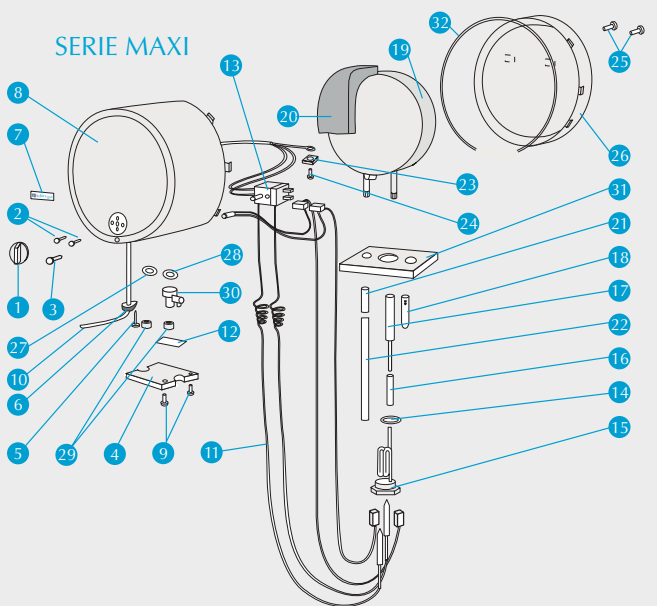
This 30 nominal litres water heater is easy to install thanks to its small size; it is planned and manufactured with care to ensure maximum functionality, service and long life. Useful in the kitchen for frequent needs of hot water.

860 °C Bayer process enamelling of the steel boiler (according to the norm DIN 4753) plus magnesium anode ensure a long lasting protection against corrosion.

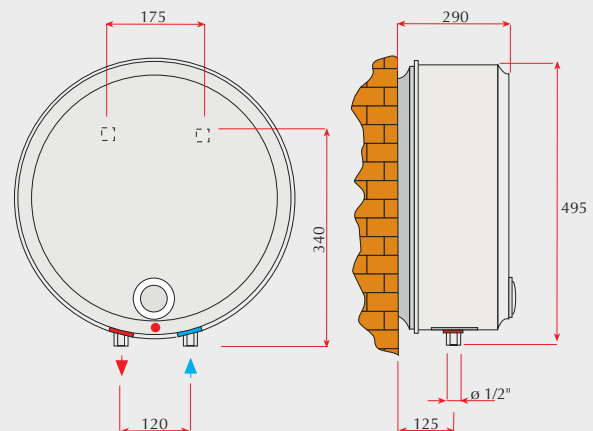
Armoured resistance in both above or below the sink models are equipped with an adjustable thermostat and with safety against over-heating.

Hydraulic safety valve is calibrated at 8 bar.

Insulation made up by polyurethane foam CFC free respects the environment.



- | | |
|-----------------------------------|--|
| 1 - Thermostat knob | 19 - Water tank |
| 2 - Thermostat screws | 20 - Polyurethane foam insulation |
| 3 - Pilot lamp | 21 - Adaptor |
| 4 - Inspection cover | 22 - Stainless extension for outlet water pipe |
| 5 - Screws for cable block | 23 - Earth plate |
| 6 - Cable block | 24 - Earth screw |
| 7 - Brand name | 25 - Screw tank holder |
| 8 - Frontal cover | 26 - Back case |
| 9 - Screw for inspection cover | 27 - Red ring |
| 10 - Power wire | 28 - Blue ring |
| 11 - Wiring with pilot lamp | 29 - Thread protection |
| 12 - Identification plate | 30 - Safety and non return valve |
| 13 - Safety thermostat | 31 - Flexible protection |
| 14 - O-Ring heating element | 32 - Chrome-plated profile |
| 15 - Heating element (screw type) | 33 - Cable and binding-screw |
| 16 - Protection for anode shank | 34 - Lock for thermostat cables |
| 17 - Magnesium anode | 35 - Screw |
| 18 - Jet breaker | |



lapido

SUPERMAXI SERIES

DESIGN



These up-to-date 25 and 30 nominal litres water heaters are designed with great care to details, thanks to their refined and elegant appearance; they fit well the house as part of the decor.

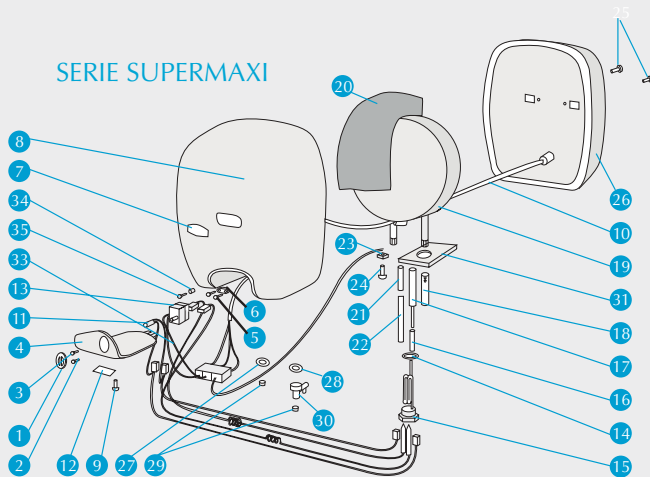
860 °C Bayer process enamelling of the steel boiler (according to the norm DIN 4753) plus magnesium anode ensure a long lasting protection against corrosion.

Armoured resistance in both above or below the sink models are equipped with an adjustable thermostat and with safety against over-heating.

Hydraulic safety valve is calibrated at 8 bar.

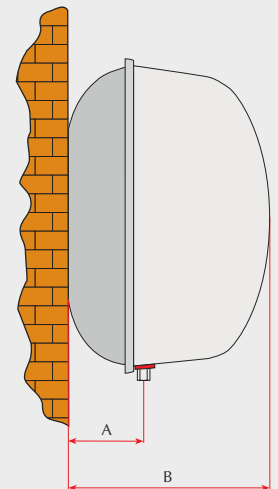
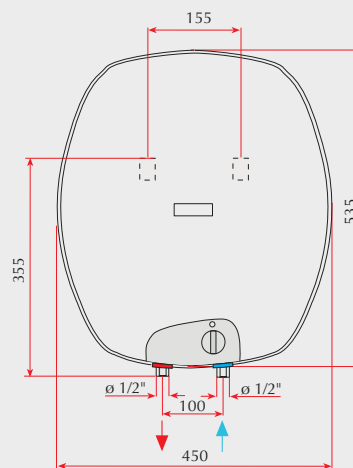
Insulation made up by polyurethane foam CFC free respects the environment.

SERIE SUPERMAXI



- 1 - Thermostat knob
- 2 - Thermostat screws
- 3 - Pilot lamp
- 4 - Inspection cover
- 5 - Screws for cable block
- 6 - Cable block
- 7 - Brand name
- 8 - Frontal cover
- 9 - Screw for inspection cover
- 10 - Power wire
- 11 - Wiring with pilot lamp
- 12 - Identification plate
- 13 - Safety thermostat
- 14 - O-Ring heating element
- 15 - Heating element (screw type)
- 16 - Protection for anode shank
- 17 - Magnesium anode
- 18 - Jet breaker

- 19 - Water tank
- 20 - Polyurethane foam insulation
- 21 - Adaptor
- 22 - Stainless extension for outlet water pipe
- 23 - Earth plate
- 24 - Earth screw
- 25 - Screw tank holder
- 26 - Back case
- 27 - Red ring
- 28 - Blue ring
- 29 - Thread protection
- 30 - Safety and non return valve
- 31 - Flexible protection
- 32 - Chrome-plated profile
- 33 - Cable and binding-screw
- 34 - Lock for thermostat cables
- 35 - Screw



DIMENSIONS mm	SUPERMAXI 25	SUPERMAXI 30
A	90	130
B	290	330

M SERIES

SIMPLICITY AND WELFARE

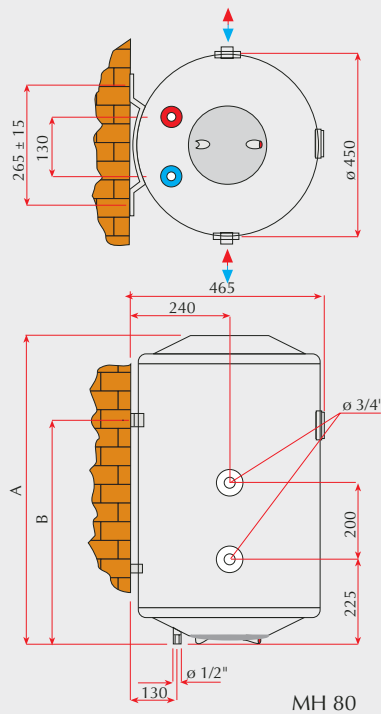
The M series is characterized by a significant ratio of quality to price.

Thanks to the continuous commitment of Idropi in maintaining high quality standards and in complying with the market's requests, our company has projected this range of water heaters that has become the pride and joy of our company.

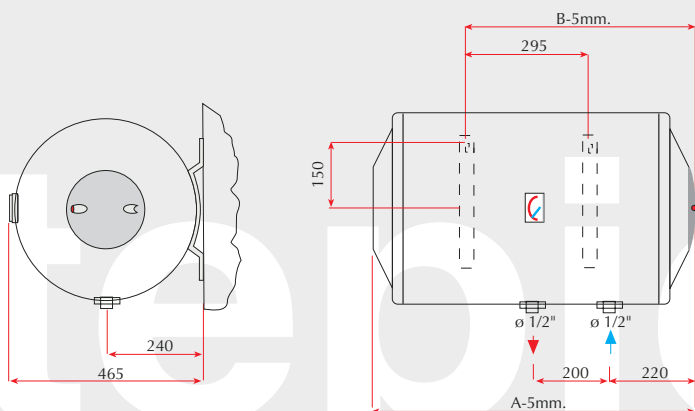
Thanks to the 50-80-100 litre models, the M series represents the right balance between service and easy installation, simple design and reliability. This kind of water heaters guarantees long lasting performance thanks to the 860 °C enamelled steel boiler, screw type heating element and magnesium anode for further anti-corrosion protection.

A wide range of products satisfies all requests: from the horizontal assembling version for those who have space problems, to the thermoelectric version that allows the use of central heating to produce hot water with a high-output bilateral heat exchanger; equipped with a connection on both sides to make installation easier.

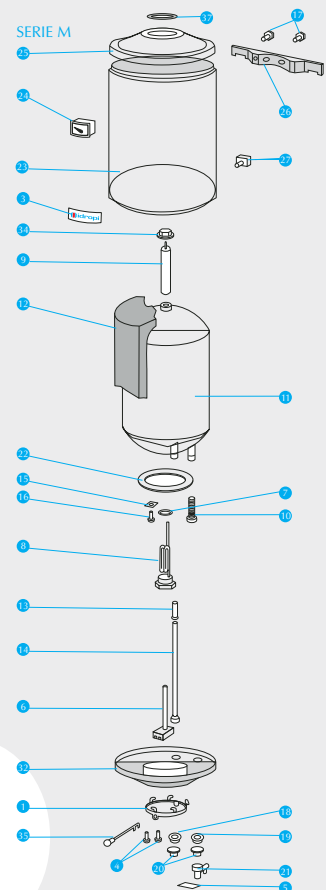
High density thermal insulation made up of high-density polyurethane CFC free foam respects the environment.



MH 80



- 1 - Inspection cover
- 3 - Brand Name
- 4 - Screws for inspection cover
- 5 - Identification plate
- 6 - Safety thermostat
- 7 - O-Ring heating element
- 8 - Heating element (screw type)
- 9 - Magnesium anode
- 10 - Jet breaker
- 11 - Water tank
- 12 - Polyurethane foam insulation
- 13 - Adapter
- 14 - Stainless extension for outlet water pipe
- 15 - Earth plate
- 16 - Earth screw
- 17 - Screw tank holder
- 18 - Red ring
- 19 - Blue ring
- 20 - Thread protection
- 21 - Safety and non-return valve
- 22 - Flexible protection
- 23 - Jacket
- 24 - Thermometer
- 25 - Top cover
- 26 - Mounting bracket
- 27 - Spacer
- 32 - Bottom cover
- 34 - Anode holder
- 35 - Pilot lamp
- 37 - Cover inspection



TECHNICAL DATA

FEATURES		SERIES MINI							SERIES MAXI		
		UNIT	MINI 10	MINI 10R	MINI 10Rs	MINI 15	MINI 15R	MINI 15Rs	MAXI 30	MAXI 30R	
mounting system			over sink	over sink	under sink	under sink	over sink	over sink	over sink	over sink	
electrical parts	power	kW	1,2	1,2	1,2	1,5	1,5	1,2	1,5	1,5	
	heating element voltage	V	230							230	
	adjustable thermostat		unipolar							unipolar	
	safety thermostat		bipolar manual rest							bipolar manual rest	
	rated current	A	5,2	5,2	5,2	6,5	6,5	5,2	6,5	6,5	
	pilot lamp		red color							red color	
	external thermostat regulation		no	yes	yes	no	yes	yes	no	yes	
tank	material		steel							steel	
	thickness	mm	2							2	
	anticorrosion protection		glass lined with Bayer process 860 °C according to DIN 4753 + replaceable magnesium anode							glass lined with Bayer process 860 °C according to DIN 4753 + replaceable magnesium anode	
	maximum working pressure	bar	8							8	
	heating element fitting		muff 1" 1/4							muff 1" 1/4	
	cold water inlet		stainless steel pipe with plastic jet breaker							stainless steel pipe with plastic jet breaker	
	hot water outlet		insulated stainless steel pipe							insulated stainless steel pipe	
connections	hot water outlet	inch	1/2"							1/2"	
	cold water inlet	inch	1/2"							1/2"	
thermal insulation	type		injected polyurethane foam							injected polyurethane foam	
body	front and back cover		anti-shock and anti-static propylene							anti-shock and anti-static propylene	
	wall hanged		holes on the back cover							holes on the back cover	
heating time for t° = 45 °C		min	30	30	30	35	35	40	45	45	
maximum working temperature		°C	75							75	
hydraulic safety valve setting		bar (±1)	8							8	
package	height	cm	48	48	48	48	48	48	50	50	
	width	cm	36	36	36	36	36	36	50	50	
	depth	cm	22	22	22	29	29	29	31	31	
net weight		Kg	6,5	6,5	6,5	7,5	7,5	7,5	9,8	9,8	
gross weight		Kg	7,1	7,1	7,1	8,2	8,2	8,2	11	11	

SUPERMAXI		FEATURES		STORAGE SERIES						
25R	30R			M SERIES						
over sink	over sink	mounting system	UNIT	MV 50	MV 80	MV 100	MVT 80	MVT 100	MH 80	
1,5	1,5			vert	vert	vert	vert	vert	horiz	
230		electrical parts	power	kW	1,2					
			heating element voltage	V	230					
unipolar			thermostat		unipolar					
			rated current	A	5,2					
bipolar manual rest			pilot lamp		yes					
6,5	6,5		ext. thermostat adjustment		no					
red color		tank	material		steel					
yes	yes		thickness	mm	1,5					
steel			anticorrosion protection		glass lined with Bayer process 860 °C according to DIN 4753 + replaceable magnesium anode					
2			maximum working pressure	bar	8					
glass lined with Bayer process 860 °C according to DIN 4753 + replaceable magnesium anode			heating element fitting		muff 1" 1/4					
8			cold water inlet		stainless steel pipe with plastic jet breaker					
			hot water outlet		insulated stainless steel pipe					
muff 1" 1/4			connections	hot water outlet	inch	1/2"				
stainless steel pipe with plastic jet breaker				cold water inlet	inch	1/2"				
insulated stainless steel pipe				recycle	inch	no				
1/2"		heat	type		-	-	-	bilat.	bilat.	-
1/2"			exchange surface	m ²	-	-	-	0,6	0,6	-
injected polyurethane foam			maximum working pressure	bar	-	-	-	4	4	-
anti-shock and anti-static propylene			connections	inch	-	-	-	3/4"	3/4"	-
holes on the back cover		thermal insulation	type		injected polyurethane foam					
45	50	body	jacket		steel jacket epoxy powders varnished 180 °C					
75			covers		anti-shock and anti-static propylene					
8			thermometer		yes					
55	55		wall hanged		universal bracket					double bracket
47	47	heating time for t° = 45 °C	min	140	220	270	220	270	220	
31	35	maximum working temperature	°C	75						
10	10,8	hydraulic safety valve setting	bar (±1)	8						
package		height	cm	55	80	91	80	91	80	
		width	cm	50						
		depth	cm	50						
11	12	net weight	Kg	13,5	19	22	22	25	19	
		gross weight	Kg	15	21	24	24	27	21	

WOOD SERIES



HEAT ACCORDING TO NATURE

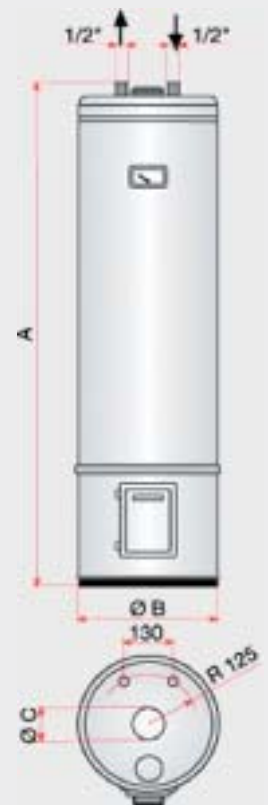


The range of Tepido wood water heaters gives to those who only have wood at their disposal the possibility to enjoy the benefits of having a water heater. This energy source combines management savings, ecology and comfort successfully.

Models with electric resistance that ensure performance and characteristics of an efficient electric water heater are available for those who need a choice in specific scenarios.

The construction is particularly projected in order to permit a simple and plentiful load of wood, good outlet and long lasting heat.

The ash gatherer is designed to make the collecting effective and to make its destruction easier. All models are equipped with a magnesium anode to guarantee protection against corrosion.



TECHNICAL DATA						
FEATURES		UNIT	L BIG	LE BIG	L 80	LE 80
heating element		Watt	-	1200	-	1200
		Volt	-	230	-	230
maximum working pressure		bar	8			
hydraulic safety valve setting		bar (±1)	8			
dimensions	A	mm	1420	1420	1400	1400
	ØB	mm	400	400	350	350
	ØC	mm	90	90	80	80
package	height	cm	144	144	142	142
	width	cm	45	45	40	40
	depth	cm	43	43	38	38
weight	net	Kg	64,5	65,5	43	44
	gross	Kg	67	68	45	46

tepido